

Drying cabinet

DC 4



FEATURES

- Flexible construction allows hanging bars to slide easily forward for easy access to garments or down for more space.
- Easy to install; the evacuating channel is connected to the ventilation system and the humid air is transported out of the room.
- All electrical components are placed on the top which makes it easy to maintain.
- Pull-out hanging system
- 3 temperatures; high, normal, low
- Energy efficient
- Timer adjustable up to 4 hours
- Overheat protection
- IP 24 classification. CE-approved
- The door can be ordered right- or left-hanged

OPTIONS

- Baskets to drip dry on a flat surface
- Hangers for small items (door frame)

MARKETS

Day care center, Schools, Road workers dressing room, Ships, Airports, Ski resorts, Campings, Security

Main specifications		DC4
Loading capacity	kg/lbs	4 kg/8,8 lbs
Drying capacity	g/min*	17
Hanging length	m/feet	16/52,5
Drying time, economy 30° C	min*	180
Drying time, express 45° C	min*	120
Heating effect	kW	1,5
Total effect	kW	1,535
Energy consumption economy /kg	kWh	0,5
Energy consumption express /kg	kWh	0,6
*Valid for high-spinned textiles.		

Technical specification		DC4
ELECTRICAL CONNECTIONS		
Electrical connection		1N, 230 V, 50 Hz
Fuse	A	10
Total effect	kW	1,535
Heating elements	kW	1,5
AIR CONNECTIONS		
Outlet exhaust	ø mm/inch	100/3,94
Outlet air flow	m³/h	50
Pressure drop	max Pa	60
Dewatering capacity	g/min	17
SOUND LEVEL		
Airborne sound level	dB(A)	60
SHIPPING DATA		
Net	kg/lbs	61/134,5
Crated	kg/lbs	4/8,8
Shipping data net	kg/lbs	65/143
Shipping volume	m³	0,2
OPTIONAL EXTRAS		
Air exchanger 1 vent., 125 mm/4,9 inch	part number	141009
Air exchanger 2 vent., 160 mm/6,3 inch	part number	141018
DIMENSIONS		
Width	mm/inch	595/23,4
Depth	mm/inch	615/24,2
Height	mm/inch	1915/75,4

06-2010 / 538253

The company Primus preserves the right to change the machines and the specification in this leaflet at any time, without prior notice. Details and photographs are only for information and never binding.

www.primuslaundry.com



Drying cabinet

DC 8, DC 16



FEATURES

- Very low energy consumption, only 0,6 kWh/kg, very short drying time, 40 minutes
- A large display shows with symbols and text, information during the drying process.
- Manual or automatic programs. The automatic program dries the clothes until they are dry, not a minute longer thanks to our own Humidity Tracking System (HTS)
- 3 temperature levels for the manual programs and 2 automatic programs; cabinet dry and iron dry.
- 17m (DC 8), 30m (DC 16) hanging length
- Double overheat-protection for increased security.
- The top is removable for easier handling and installation.
- Test program and error codes make it easier for maintenance
- Double sheet metal in sides and doors minimize loss of energy (DC 16)
- Hanging frame can be rotated 90° (DC 16)
- Three fans create perfect balance between evacuated and re-circulated air
- Service menu with possibilities to adjust the function of the cabinet

MARKETS

Laundries, Laboratory, Fire brigades, Police stations, Army, Airports, Campings, Golf clubs, Football clubs, Diving schools, Theatres, Spas, Horse farms, Oil platforms, Ski resorts, Fish industries, Marines, Ships

OPTIONS

- Can be ordered with left-hand hanging frame
- Can be ordered with single rack bar
- Hook rack, set of three

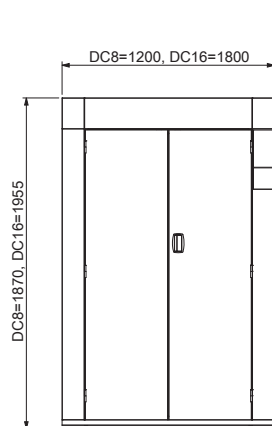
Main specifications		DC 8	DC 16
Loading capacity	kg/lbs	up to 8 kg/17,6 lbs	16
Drying capacity	g/min	78*	96**
Hanging length	m/feet	17	30
Drying time,	min	40*	65**
Evacuated air	m ³ /h	240	550
Heating effect	kW	6,0	9,0
Total effect	kW	6,3	9,3
Energy consumption /kg	kWh	0,6	0,65

* Drying of 6 kg cotton (dry weight), washed and high-spinned to 53% residual moisture. The cabinet works another 15 minutes with cool-down after the textiles are dry. Compared to earlier models, this cabinet has 25% lower Single bar energy consumption!

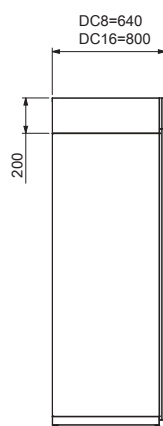
** Drying of 12 kg cotton (dry weight), washed and high-spinned to 53% residual moisture. The cabinet works another 15 minutes with cool-down after the textiles are dry.

Technical specification		DC 8	DC 16
ELECTRICAL CONNECTIONS			
Electrical connection		3~N, 400 V, 50 Hz	3~N, 400 V, 50 Hz
Fuse	A	10	16
Total effect	kW	6,3	9,3
Heating elements	kW	6,0	9,0
AIR CONNECTIONS			
Outlet exhaust	ø mm/inch	125/4,92	160
Outlet air flow	m ³ /h	150	300
Pressure drop	max Pa	55	260
SOUND LEVEL			
Airborne sound level	dB(A)	58	59
SHIPPING DATA			
Net	kg/lbs	145/319,7	235/518
Crated	kg/lbs	27/59,52	40/88,2
Shipping data net	kg/lbs	172/379,19	275/606
Shipping volume	m ³	1,78	1,76
OPTIONAL EXTRAS			
Air exchanger 1 vent., 125 mm/4,9 inch	part number	141009	141009
Air exchanger 2 vent., 160 mm/6,3 inch	part number	141018	141018
Single bar	part number	131070	
Hook rack, set of three	part number	131071	131071
DIMENSIONS			
Width	mm/inch	1200/47,2	1800/71
Depth	mm/inch	640/25,2	800/31,5
Height	mm/inch	1870/73,6	1955/77

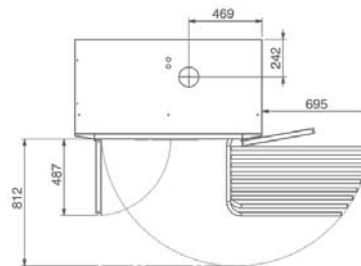
DCS 8 16



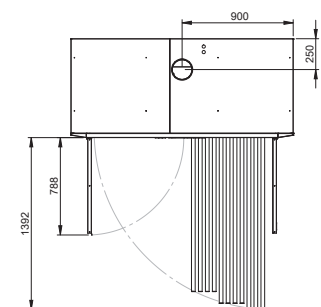
DCS 8 16



DCS 8



DCS 16



The company Primus preserves the right to change the machines and the specification in this leaflet at any time, without prior notice. Details and photographs are only for information and never binding.

www.primuslaundry.com

ISO 9001
ISO 14001
BUREAU VERITAS
Certification



Drying cabinet for heavy duty overalls

FDC 6

FDC 6 especially developed for drying heavy duty overalls. Efficient and gentle drying procedure, the dryer has a capacity for 6 larger overalls. A large display shows with symbols and text. One system dries the overall from the outside. The other system dries the overalls from the inside. Three manual programmes and three automatic programmes, with the Humidity Tracking System (HTS). HTS is our new system that measures the level of humidity every second, to determine exactly when the textiles are dry. Programmes can also be set for other garments and station wear.



FEATURES

- Drying process from the outside and inside
- Adjustable programmes
- Drying capacity of 6 large overalls equal to 30 kg
- Drying procedure hardens the impregnation
- Gentle drying without friction
- Up to nine automatic programmes
- Indoor lighting
- Detachable hangers and racks for easier handling
- Programme ends with "cool down" to room temperature

OPTIONS

- Racks for gloves and boots in stainless steel
- Optional hangers to dry gloves and boots
- Optional hangers for other garments and station wear

MARKETS

Fire brigades, Airports, Oil platforms, Nuclear plants, Army, Rescue services

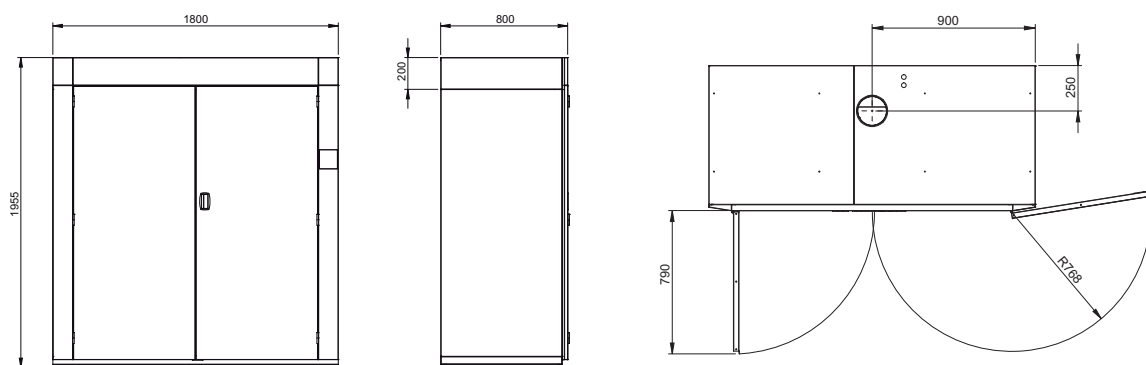


Two heating systems - short drying time.

Main specifications		DC6
Loading capacity max	kg	30
Complete overalls	pcs	6
Heating effect	kW	12
Total effect	kW	12,45

Technical specification		DC6
ELECTRICAL CONNECTIONS		
Electrical connection*		3-N, 400 V, 50 Hz
Fuse	A	20
Total effect	kW	12,45
Heating elements	kW	12
AIR CONNECTIONS		
Outlet exhaust	ø mm/inch	160/6,3
Outlet air flow	m ³ /h	600
SHIPPING DATA		
Net	kg/lbs	200/441
Crated	kg/lbs	40/88,2
Shipping data net	kg/lbs	240/529
Shipping volume	m ³	1,76
OPTIONAL EXTRAS		
Air exchanger 1 vent., 125 mm/4,92 inch	part number	141009
Air exchanger 2 vent., 160 mm/3,6 inch	part number	141018
Rack for gloves	part number	131008
Rack for boots	part number	131009
DIMENSIONS		
Width	mm/inch	1800/71
Depth	mm/inch	800/31,5
Height, inner	mm/inch	1752/69
Height, outhr	mm/inch	1955/77

* Other voltage on request.



06-2010 / 538255

The company Primus preserves the right to change the machines and the specification in this leaflet at any time, without prior notice. Details and photographs are only for information and never binding.

www.primuslaundry.com

